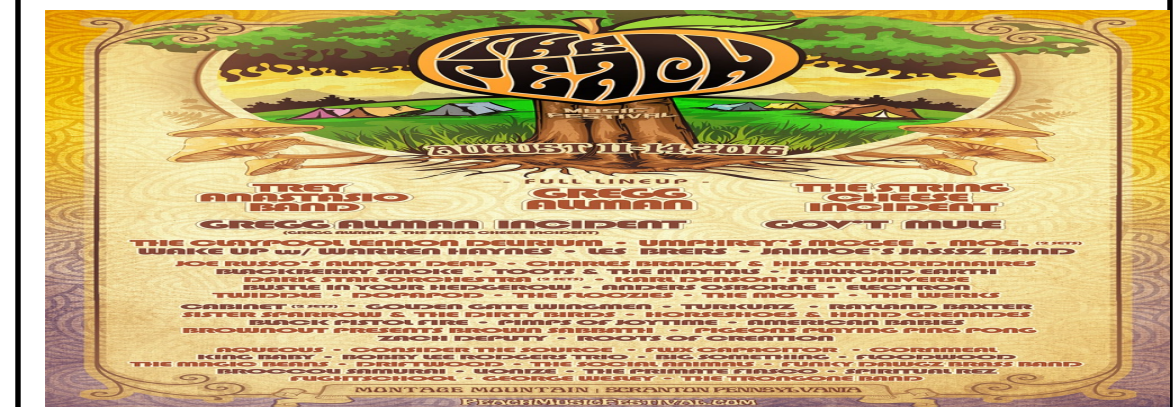
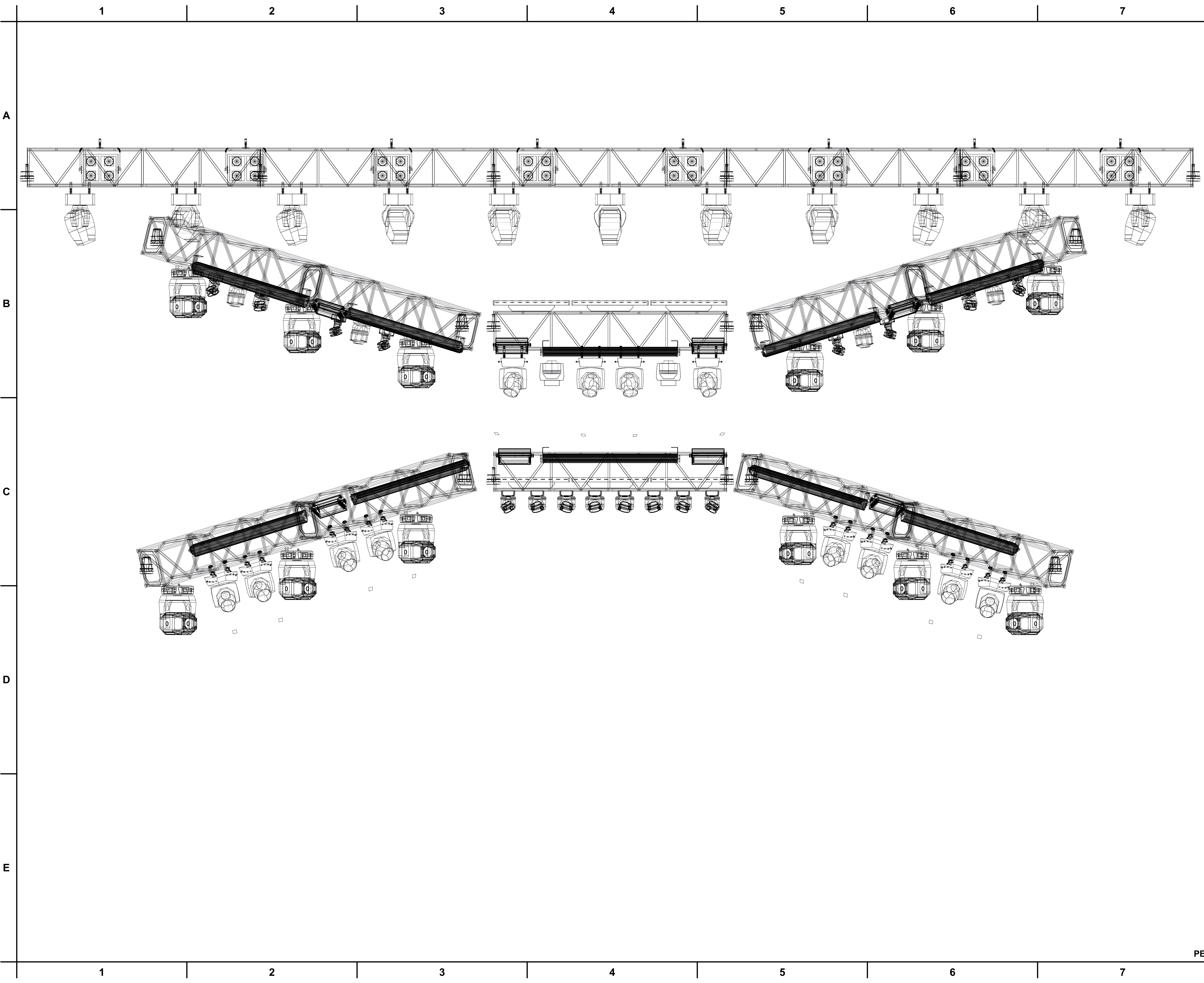


**General Notes**  
1. THIS DRAWING REPRESENTS VISUAL CONCEPTS AND CONSTRUCTION SUGGESTIONS ONLY. THE DESIGNER IS NOT QUALIFIED TO DETERMINE THE STRUCTURAL APPROPRIATENESS OF THIS DESIGN AND WILL NOT ASSUME RESPONSIBILITY FOR IMPROPER ENGINEERING, CONSTRUCTION, OR HANDLING. ALL MATERIALS, FINISHES, AND CONSTRUCTION MUST COMPLY WITH THE MOST STRINGENT FIRE AND SAFETY CODES AS APPLICABLE.

	Pro 1500 Hang	12
48 Channel Mode		
	Martin Mac 700 Wash	11
23 Channel 16 Bit Extended Mode		
	Martin MAC Aura	6
25 Channel extended Mode		
	Clay Paky Sharpy	12
20 Channel Vector Mode		
	Mac 101	16
12 Channel RGB Mode		
	Sixpar 100	18
6 Channel Mode		
	Color Blaze 72	10
36 Channel Mode 12 RGB Cells Per Unit		
	Elements Krypton 10	6
10 Channel Mode		
	Martin Atomic Strobe 3000	8
4 Channel Effect Mode		
	Thomas 4-lite Mole	8
Unit Number Address		
	700	

Production Title		PEACH FESTIVAL 2016 PIN POINT LIGHTING MAIN STAGE PLOT	
Drawing Title		CHIEF: TOECUTTER 610-357-3081 Toecutter@pinpointlighting.com TECHS: Ryan Morris, Zac Coren	
Designer	TOECUTTER	Director	TOECUTTER
Drawn By	TOECUTTER	Scale	1/2"=1' ARCH D
Venue	MONTAGE MTN	Drawing No. <b>UNO</b> of OCHO	
Date	08/11-14/2016		
CAD File Name	PEACHFEST2016 REV 3.VMX		



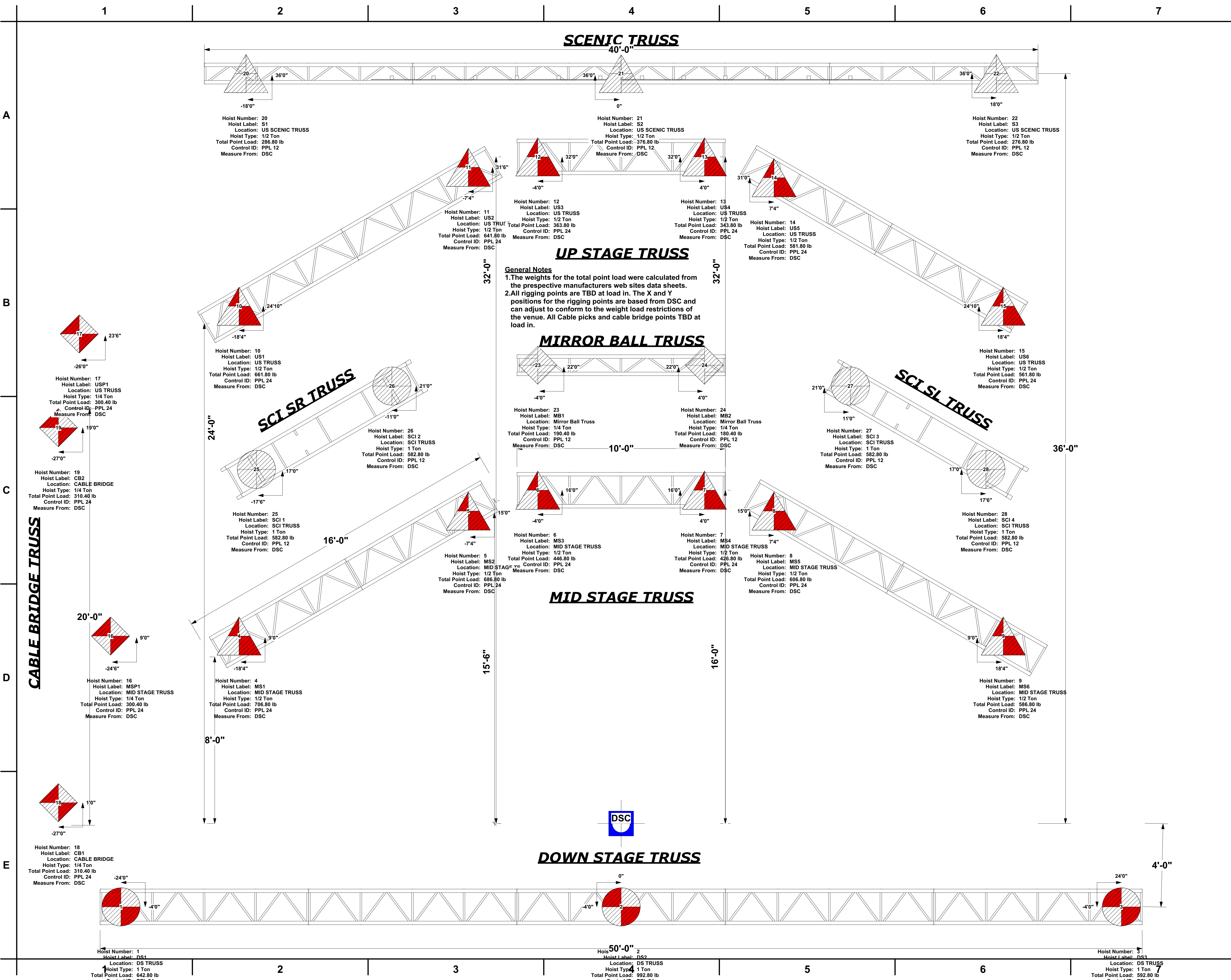


**General Notes**  
1. THIS DRAWING REPRESENTS VISUAL CONCEPTS AND CONSTRUCTION SUGGESTIONS ONLY. THE DESIGNER IS NOT QUALIFIED TO DETERMINE THE STRUCTURAL APPROPRIATENESS OF THIS DESIGN AND WILL NOT ASSUME RESPONSIBILITY FOR IMPROPER ENGINEERING, CONSTRUCTION, OR HANDLING. ALL MATERIALS, FINISHES, AND CONSTRUCTION MUST COMPLY WITH THE MOST STRINGENT FIRE AND SAFETY CODES AS APPLICABLE.

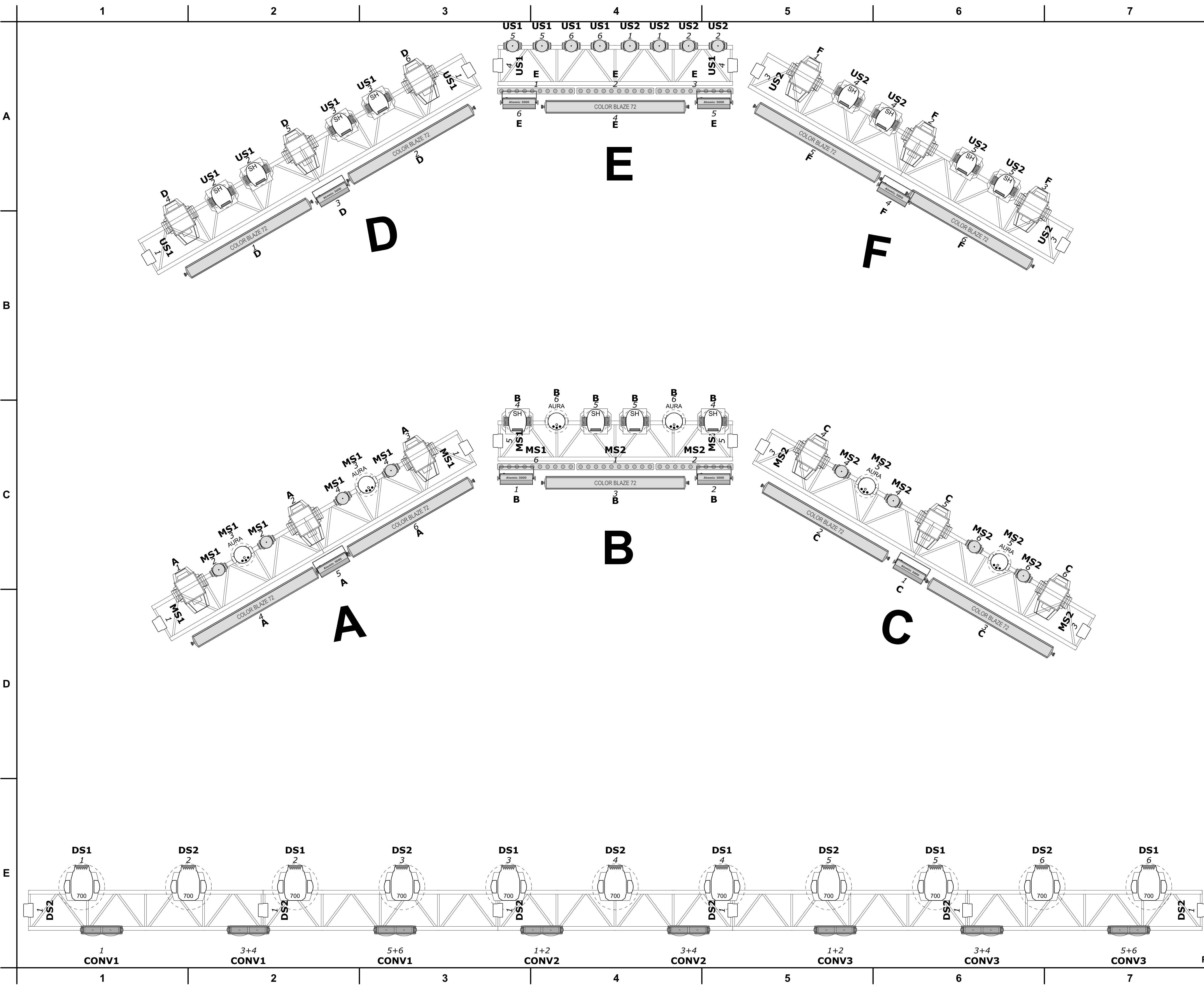
	<b>HighEnd SolaSpot Pro 1500112</b>
	<b>48 Channel Mode</b>
	<b>Martin Mac 700 Wash 11</b>
	<b>23 Channel 16 Bit Extended Mode</b>
	<b>Martin MAC Aura 16</b>
	<b>25 Channel Extended Mode</b>
	<b>Clay Paky Sharpy 12</b>
	<b>20 Channel Vector Mode</b>
	<b>Mac 101 16</b>
	<b>12 Channel RGB Mode</b>
	<b>Sixpar 100 18</b>
	<b>6 Channel Mode (Truss Toners)</b>
	<b>Color Blaze 72 10</b>
	<b>36 Channel Mode (12 RGB Cells Per Unit)</b>
	<b>Elements Krypton 10 6 6</b>
	<b>10 Channel Mode</b>
	<b>Martin Atomic Strobe 3000 8</b>
	<b>4 Channel Effect Mode</b>
	<b>Thomas 4-lite Mole 8</b>
<b>Unit Number</b> Address 700	

<b>Production Title</b> <b>PEACH FESTIVAL 2016</b> <b>PIN POINT LIGHTING</b> <b>MAIN STAGE PLOT</b>	
<b>Drawing Title</b> <b>FRONT VIEW MAIN STAGE</b> <b>CHIEF: TOECUTTER 610-357-3081</b> <b>TECHS: Ryan Morris, Zack Coren</b>	
<b>Designer</b> <b>TOECUTTER</b>	<b>Director</b> <b>TOECUTTER</b>
<b>Drawn By</b> <b>TOECUTTER</b>	<b>Scale</b> <b>Custom 21.500 ARCH D</b>
<b>Venue</b> <b>MONTAGE MTN</b>	<b>DOS</b> <b>of</b> <b>OCHO</b>
<b>Date</b> <b>8/11/16 to 8/14/16</b>	
<b>CAD File Name</b> <b>PEACHFEST2016 REV 3.WMX</b>	







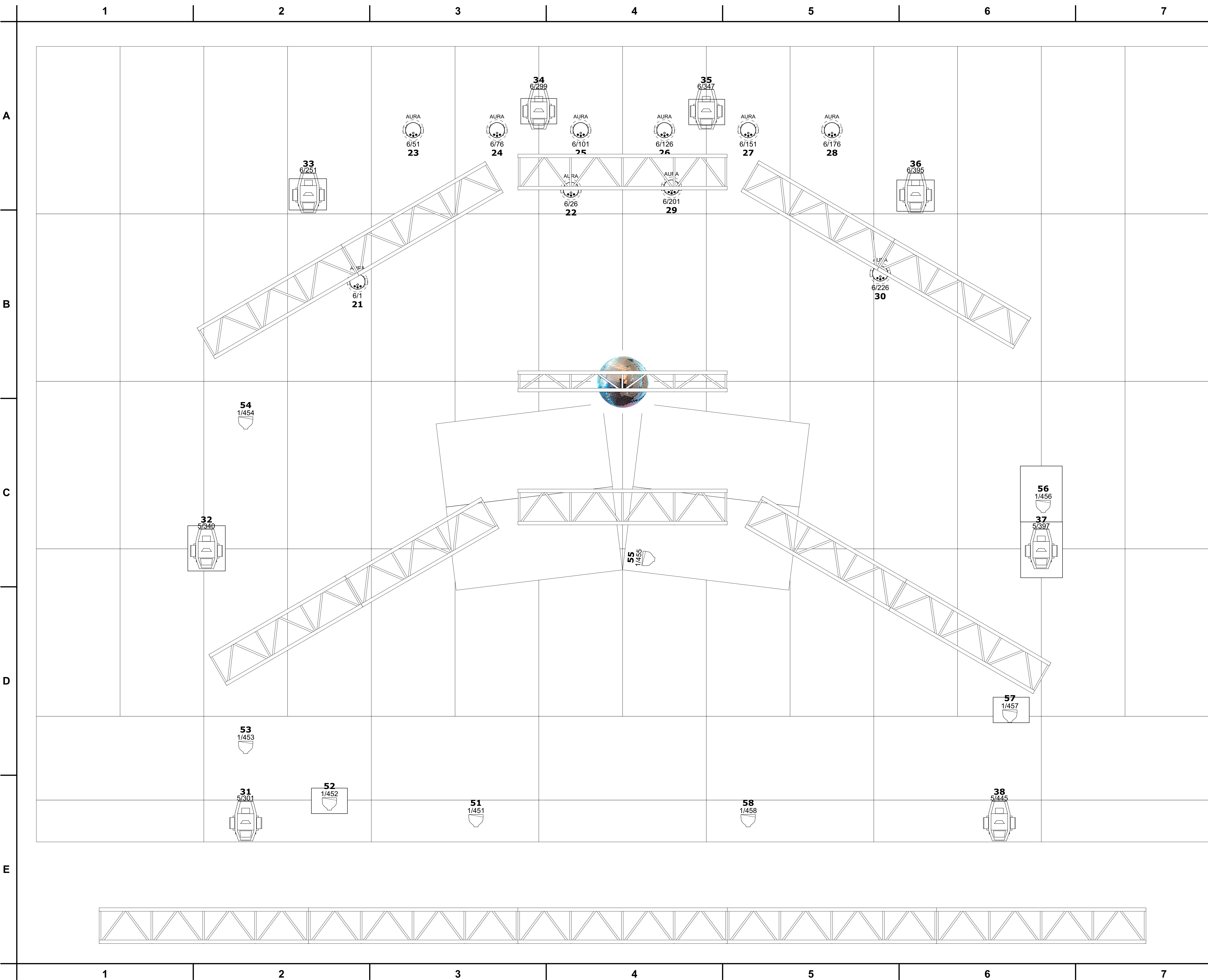


General Notes  
1. THIS DRAWING REPRESENTS VISUAL CONCEPTS AND CONSTRUCTION SUGGESTIONS ONLY. THE DESIGNER IS NOT QUALIFIED TO DETERMINE THE STRUCTURAL APPROPRIATENESS OF THIS DESIGN AND WILL NOT ASSUME RESPONSIBILITY FOR IMPROPER ENGINEERING, CONSTRUCTION, OR HANDLING. ALL MATERIALS, FINISHES, AND CONSTRUCTION MUST COMPLY WITH THE MOST STRINGENT FIRE AND SAFETY CODES AS APPLICABLE.

	Pro 1500 Hang	12
48 Channel Mode		
	Martin Mac 700 Wash 11	
23 Channel 16 Bit Extended Mode		
	Martin MAC Aura	16
25 Channel Extended Mode		
	Clay Paky Sharpy	12
20 Channel Vector Mode		
	Mac 101	16
12 Channel RGB Mode		
	Sixpar 100	18
6 Channel Mode (Truss Toners)		
	Color Blaze 72	10
36 Channel Mode (12 RGB Cells Per Unit)		
	Elements Krypton 10	6
10 Channel Mode		
	Martin Atomic Strobe 3000	8
4 Channel Effect Mode		
	Thomas 4-lite Mole	8
Unit Number		

Production Title		<b>PEACH FESTIVAL 2016</b> <b>PIN POINT LIGHTING</b> <b>MAIN STAGE PLOT</b>	
Drawing Title		<b>CIRCUITING PLOT</b> <b>CHIEF: TOECUTTER 610-357-3081</b> <b>TECHS: Ryan Morris, Zac Coren</b>	
Designer	<b>TOECUTTER</b>	Director	<b>TOECUTTER</b>
Drawn By	<b>TOECUTTER</b>	Scale	<b>Custom 21.500 ARCH D</b>
Venue	<b>MONTAGE MTN</b>	Drawing No.	<b>LAS CUATRO</b>  _____ of _____  <b>OCHO</b>
Date	<b>8/11/16 TO 8/14/16</b>		
CAD File Name	<b>PEACHFEST2016 REV 3.VWX</b>		





**General Notes**  
1. THIS DRAWING REPRESENTS VISUAL CONCEPTS AND CONSTRUCTION SUGGESTIONS ONLY. THE DESIGNER IS NOT QUALIFIED TO DETERMINE THE STRUCTURAL APPROPRIATENESS OF THIS DESIGN AND WILL NOT ASSUME RESPONSIBILITY FOR IMPROPER ENGINEERING, CONSTRUCTION, OR HANDLING. ALL MATERIALS, FINISHES, AND CONSTRUCTION MUST COMPLY WITH THE MOST STRINGENT FIRE AND SAFETY CODES AS APPLICABLE.

**TREY ANASTASIO**

**Pro 1500 Floor** 8

**48 Channel Mode**

**Martin MAC Aura** 10

**25 Channel Mode**

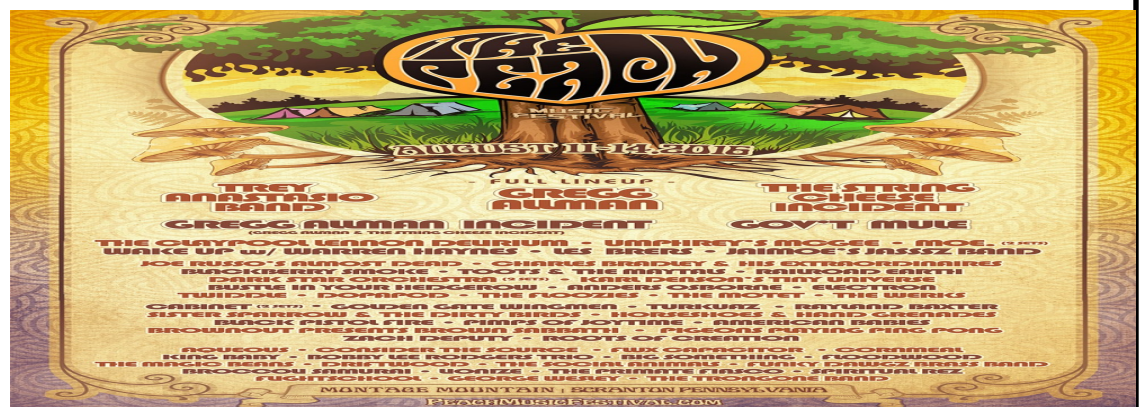
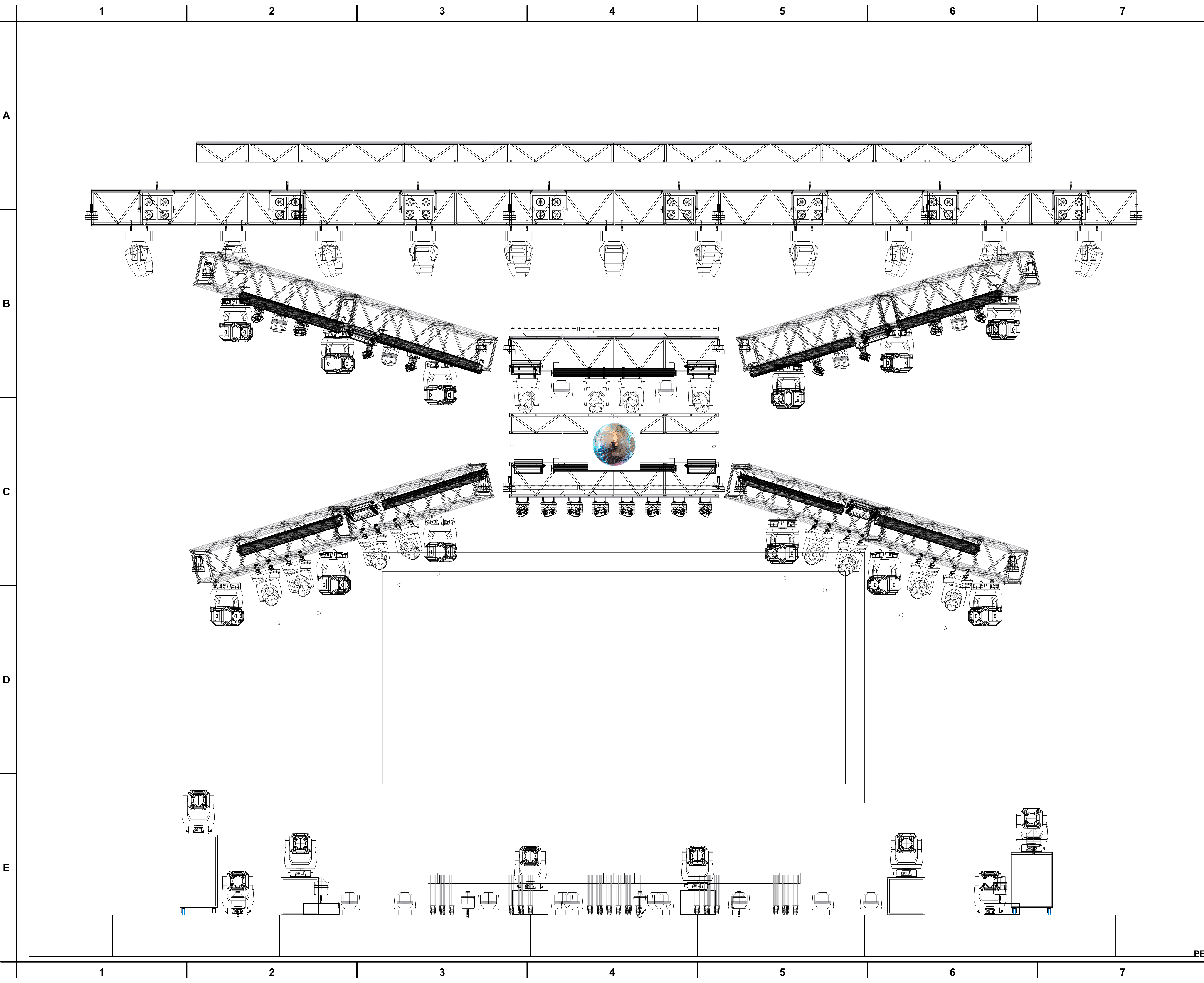
**ETC Source 4 PAR MCM (NSP)** 8

**Lamped @ 750W**  
**On Floor Bases**

**Unit Number**  
**Address**  
**700**

Production Title		<b>PEACH FESTIVAL 2016</b> <b>PIN POINT LIGHTING</b> <b>MAIN STAGE PLOT</b>	
Drawing Title		<b>TREY FLOOR LIGHT PLOT</b> <b>CHIEF: TOECUTTER 610-357-3081</b> <b>TECHS: Ryan Morris, Zac Coren</b>	
Designer	TOECUTTER	Director	TOECUTTER
Drawn By	TOECUTTER	Scale	1/2" = 1' ARCH D
Venue	MONTAGE MTN	Drawing No.	<b>CINCO</b> of OCHO
Date	8/11/16 to 8/14/16		
CAD File Name	PEACHFEST2016 REV 3.WX		





**General Notes**  
1. THIS DRAWING REPRESENTS VISUAL CONCEPTS AND CONSTRUCTION SUGGESTIONS ONLY. THE DESIGNER IS NOT QUALIFIED TO DETERMINE THE STRUCTURAL APPROPRIATENESS OF THIS DESIGN AND WILL NOT ASSUME RESPONSIBILITY FOR IMPROPER ENGINEERING, CONSTRUCTION, OR HANDLING. ALL MATERIALS, FINISHES, AND CONSTRUCTION MUST COMPLY WITH THE MOST STRINGENT FIRE AND SAFETY CODES AS APPLICABLE.

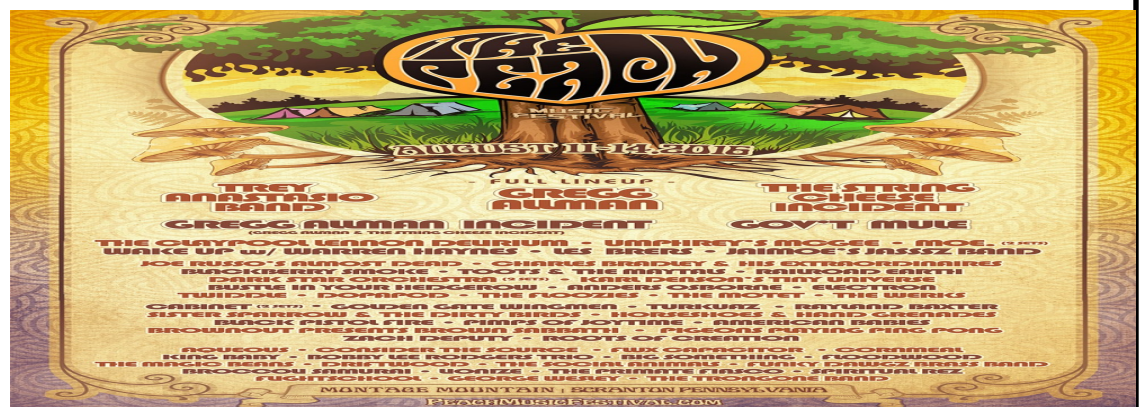
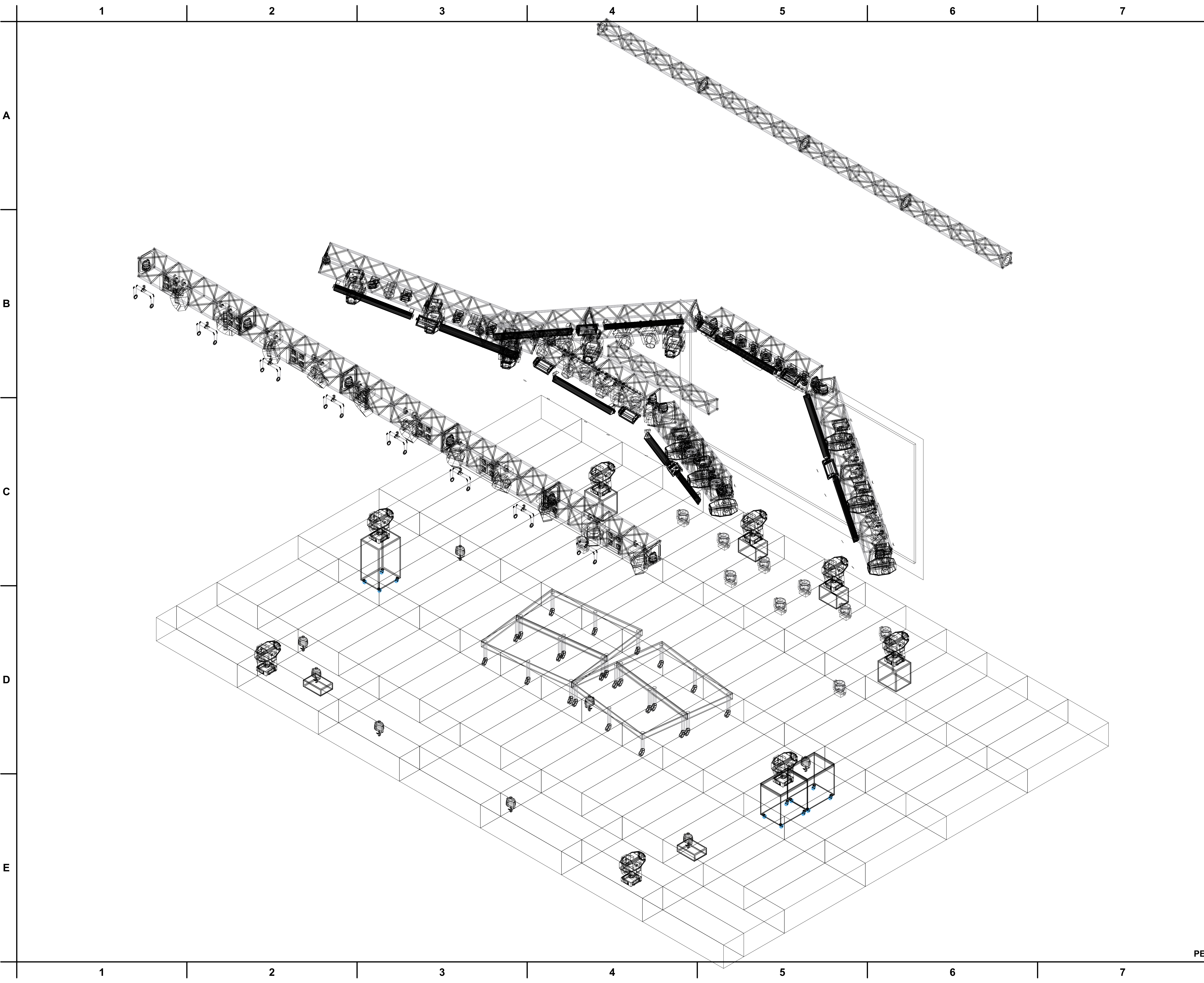
	<b>Pro 1500 Hang</b>	<b>12</b>
	<b>Pro 1500 Floor</b>	<b>8</b>
<b>48 Channel Mode</b>		
	<b>Martin Mac 700 Wash 11</b>	<b>23 Channel 16 Bit Extended Mode</b>
	<b>Martin MAC Aura</b>	<b>16 25 Channel Extended Mode</b>
	<b>Clay Paky Sharpy</b>	<b>12 20 Channel Vector Mode</b>
	<b>Mac 101</b>	<b>16 12 Channel RGB Mode</b>
	<b>Sixpar 100</b>	<b>18 6 Channel Mode (Truss Toners)</b>
	<b>Color Blaze 72</b>	<b>10 36 Channel Mode (12 RGB Cells Per Unit)</b>
	<b>Elements Krypton 10</b>	<b>6 10 Channel Mode</b>
	<b>Martin Atomic Strobe</b>	<b>8 3000 4 Channel Effect Mode</b>
	<b>Thomas 4-lite Mole</b>	<b>8</b>
	<b>ETC Source 4 PAR MCM (NSP)</b>	<b>8 Lamped @ 750W</b>

Production Title  
**PEACH FESTIVAL 2016  
PIN POINT LIGHTING  
MAIN STAGE PLOT**

Drawing Title  
**FRONT WITH TREY  
CHIEF: TOECUTTER 610-357-3081  
TECHS: Ryan Morris, Zac Coren**

Designer <b>TOECUTTER</b>	Director <b>TOECUTTER</b>
Drawn By <b>TOECUTTER</b>	Scale <b>1/2" = 1' ARCH D</b>
Venue <b>MONTAGE MTN</b>	Drawing No. <b>SEIS</b>
Date <b>8/11/16 TO 8/14/16</b>	of <b>OCHO</b>
CAD File Name <b>PEACHFEST2016 REV 3.VWX</b>	





**General Notes**  
1. THIS DRAWING REPRESENTS VISUAL CONCEPTS AND CONSTRUCTION SUGGESTIONS ONLY. THE DESIGNER IS NOT QUALIFIED TO DETERMINE THE STRUCTURAL APPROPRIATENESS OF THIS DESIGN AND WILL NOT ASSUME RESPONSIBILITY FOR IMPROPER ENGINEERING, CONSTRUCTION, OR HANDLING. ALL MATERIALS, FINISHES, AND CONSTRUCTION MUST COMPLY WITH THE MOST STRINGENT FIRE AND SAFETY CODES AS APPLICABLE.

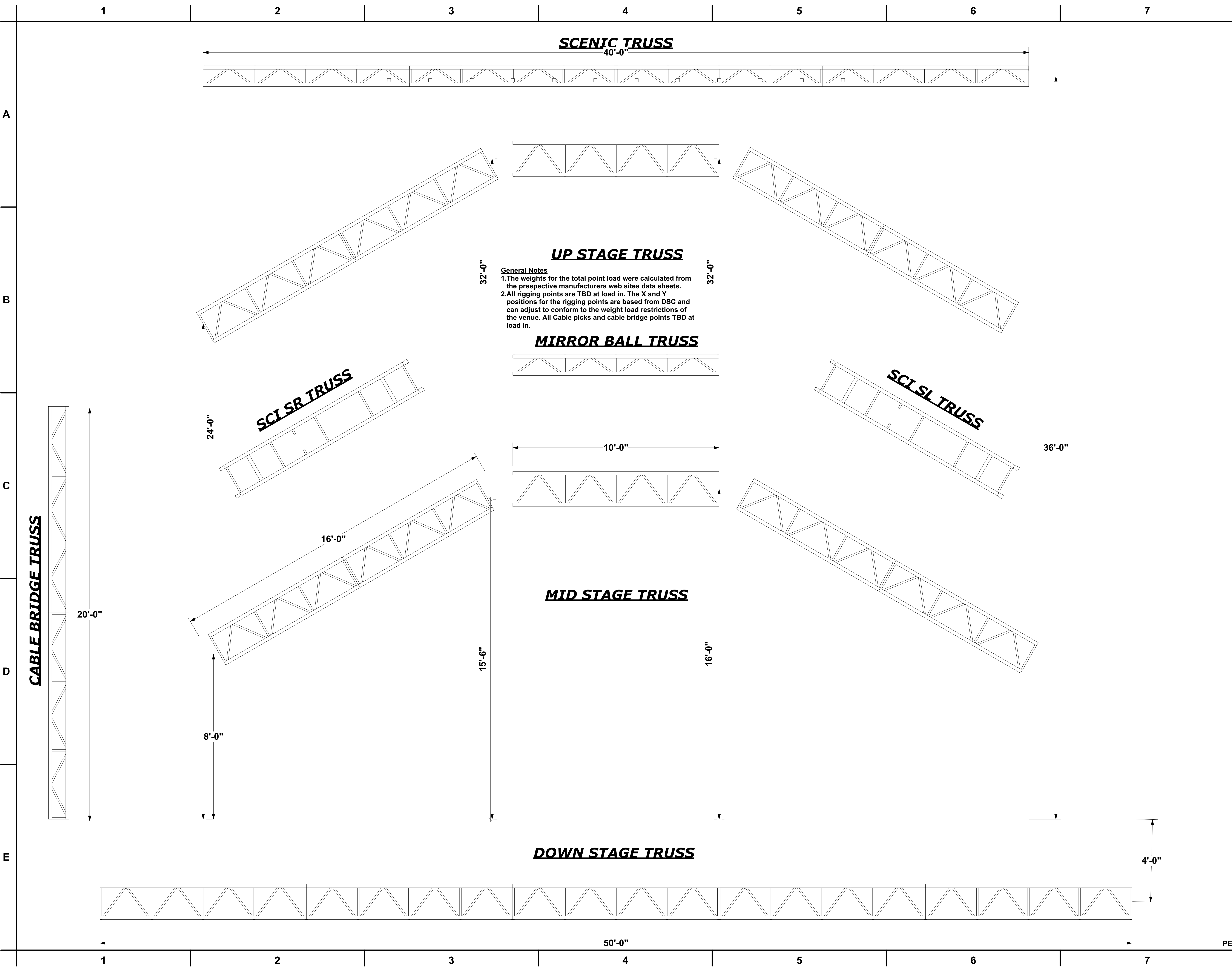
	<b>Pro 1500 Hang</b>	<b>12</b>
	<b>Pro 1500 Floor</b>	<b>8</b>
<b>48 Channel Mode</b>		
	<b>Martin Mac 700 Wash 11</b>	
<b>23 Channel 16 Bit Extended Mode</b>		
	<b>Martin MAC Aura</b>	<b>16</b>
<b>25 Channel Extended Mode</b>		
	<b>Clay Paky Sharpy</b>	<b>12</b>
<b>20 Channel Vector Mode</b>		
	<b>Mac 101</b>	<b>16</b>
<b>12 Channel RGB Mode</b>		
	<b>Sixpar 100</b>	<b>18</b>
<b>6 Channel Mode (Truss Toners)</b>		
	<b>Color Blaze 72</b>	<b>10</b>
<b>36 Channel Mode (12 RGB Cells Per Unit)</b>		
	<b>Elements Krypton 10</b>	<b>6</b>
<b>10 Channel Mode</b>		
	<b>Martin Atomic Strobe</b>	<b>8</b>
<b>3000</b>		
<b>4 Channel Effect Mode</b>		
	<b>Thomas 4-lite Mole</b>	<b>8</b>
	<b>ETC Source 4 PAR MCM (NSP)</b>	<b>8</b>
<b>Lamped @ 750W</b>		

Production Title  
**PEACH FESTIVAL 2016  
PIN POINT LIGHTING  
MAIN STAGE PLOT**

Drawing Title  
**RIGHT ISO WITH TREY  
CHIEF: TOECUTTER 610-357-3081  
TECHS: Ryan Morris, Zac Coren**

Designer <b>TOECUTTER</b>	Director <b>TOECUTTER</b>
Drawn By <b>TOECUTTER</b>	Scale <b>Custom ARCH D</b>
Venue <b>MONTAGE MTN</b>	Drawing No. <b>SIETE</b> of <b>OCHO</b>
Date <b>8/11/16 TO 8/14/16</b>	
CAD File Name <b>PEACHFEST2016 REV 3.VWX</b>	





**General Notes**  
1. THIS DRAWING REPRESENTS VISUAL CONCEPTS AND CONSTRUCTION SUGGESTIONS ONLY. THE DESIGNER IS NOT QUALIFIED TO DETERMINE THE STRUCTURAL APPROPRIATENESS OF THIS DESIGN AND WILL NOT ASSUME RESPONSIBILITY FOR IMPROPER ENGINEERING, CONSTRUCTION, OR HANDLING. ALL MATERIALS, FINISHES, AND CONSTRUCTION MUST COMPLY WITH THE MOST STRINGENT FIRE AND SAFETY CODES AS APPLICABLE.

Production Title		PEACH FESTIVAL 2016 PIN POINT LIGHTING MAIN STAGE PLOT	
Drawing Title		TRUSS CHIEF: TOECUTTER 610-357-3081 TECH: Ryan Morris, Zac Coren	
Designer	TOECUTTER	Director	TOECUTTER
Drawn By	TOECUTTER	Scale	N/A ARCH D
Venue	MONTAGE MTN	Drawing No.	OCHO of OCHO
Date	8/11/16 TO 8/14/16		
CAD File Name	PEACHFEST2016 REV 3.WX		