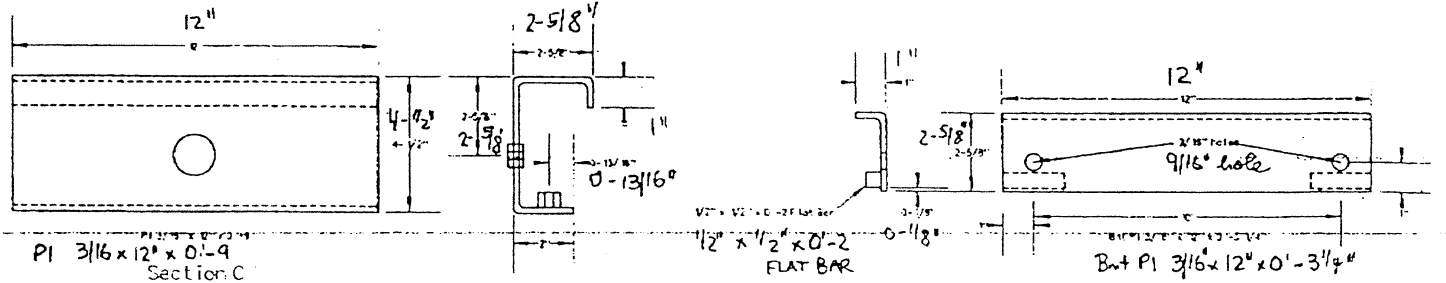
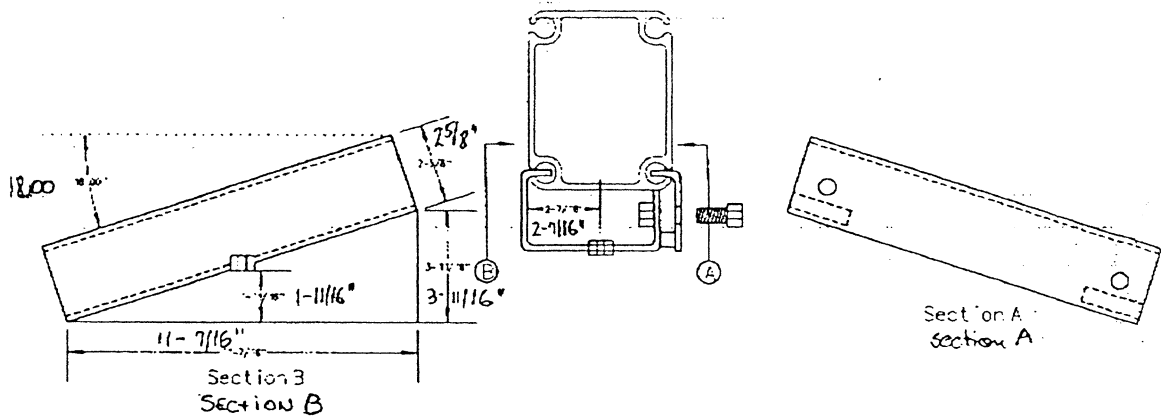


Beam Clamp



Hanging Loads

uniflex profile 120x 200

10m	1,500 lbs. *
15m	1,200 lbs. *
20m	900 lbs. *
25m	600 lbs. *

maxiflex profile 120 x 300

30m	1,450 lbs. *
40m	1,100 lbs. *
50m	900 lbs. *

* Weights are per arch. Weight has to be equally distributed over the complete width of the arch. All figures are theoretical calculation, based on a fully enclosed structure. Hanging live loads can affect the stability of the structure. Any alteration to the structure is the sole responsibility of the owner of the structure. Losberger US or any of its affiliates can not be help responsible for any action taken by a third party. Information provided is without obligation for Losberger US or any of its affiliates.